

Anatomy Department

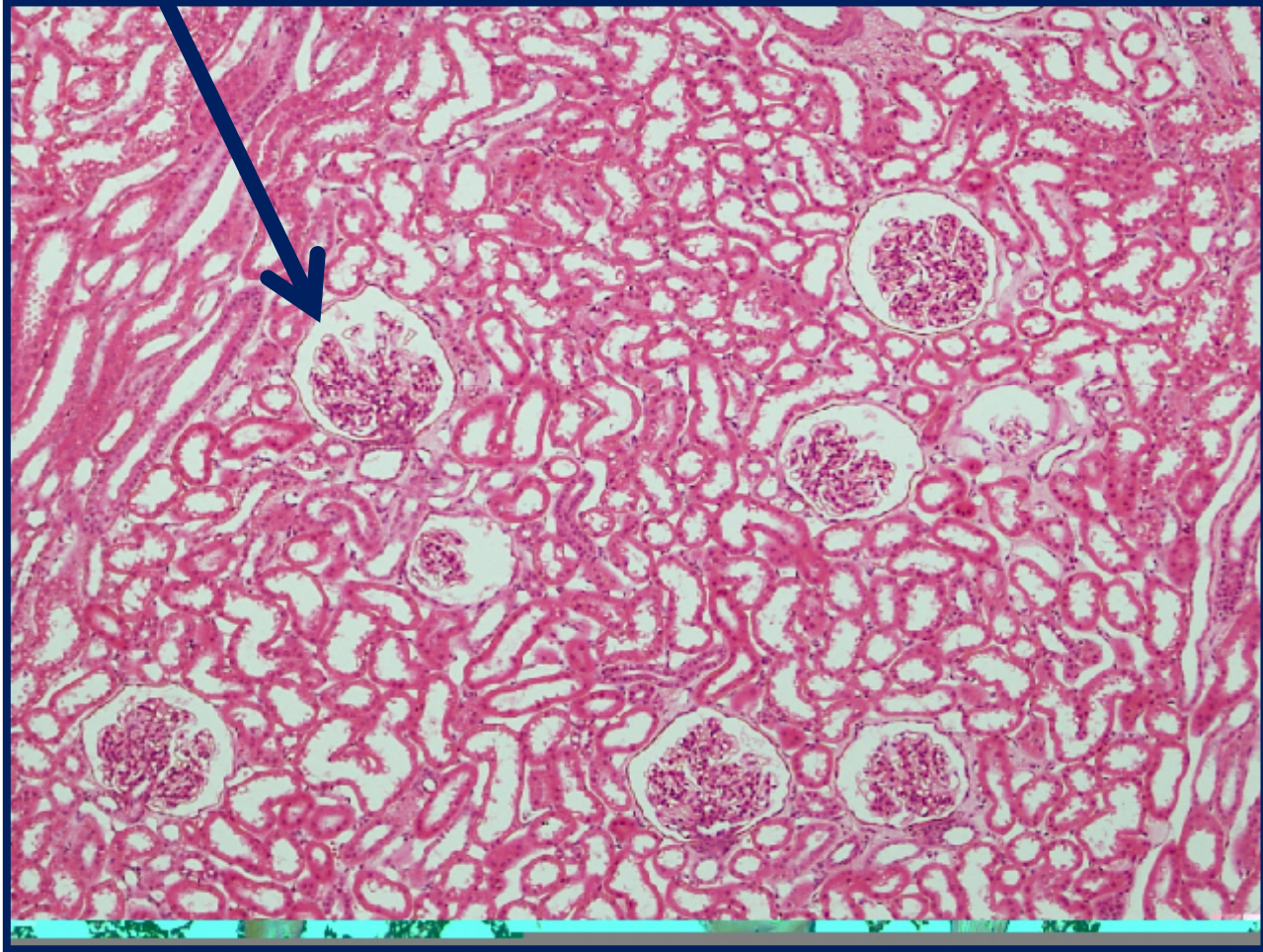
Histology Revision

2nd year pharmacy

1st term - 2010

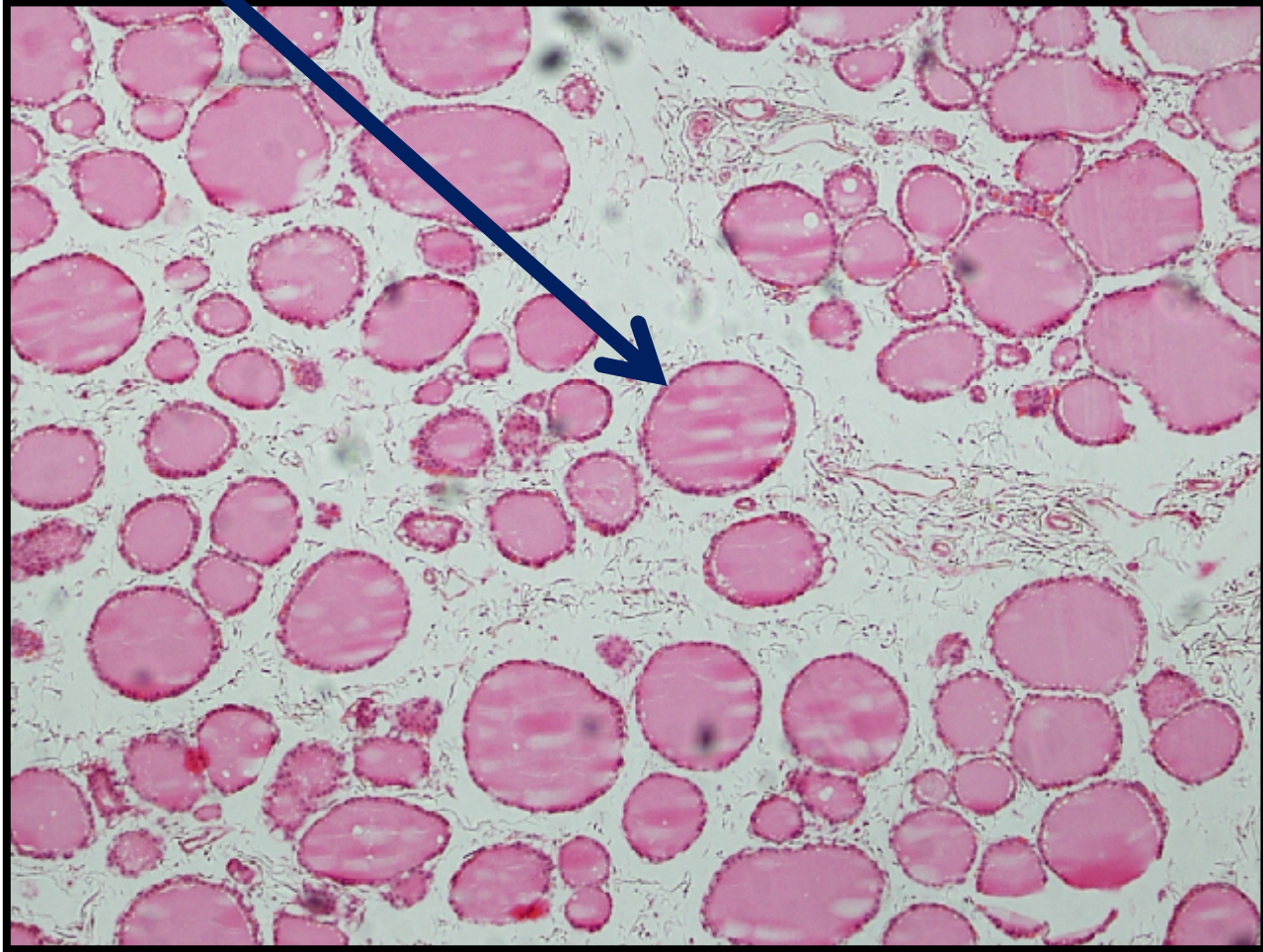
Simple squamous epithelium (kidney)

1



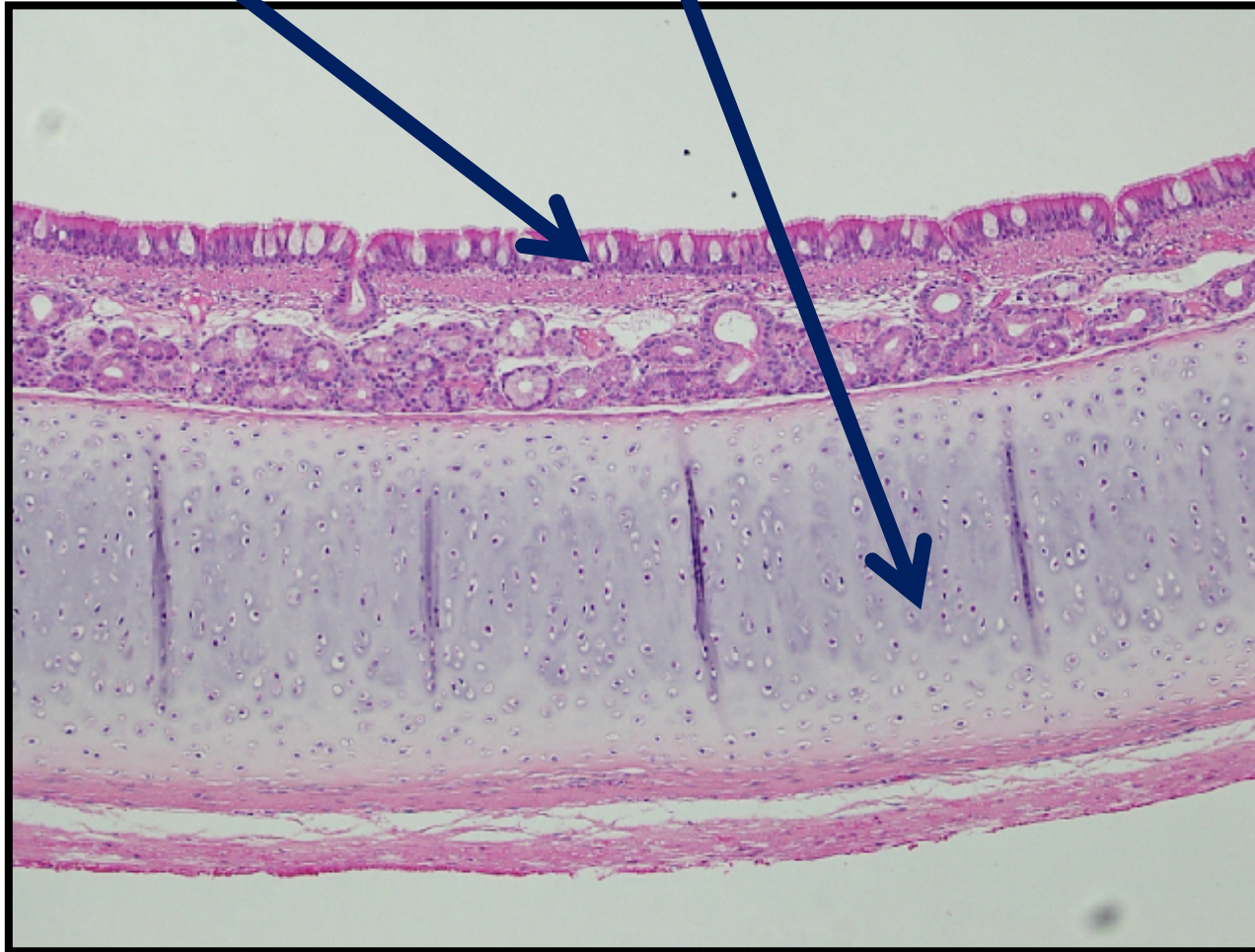
Simple cuboidal epithelium (Thyroid)

2

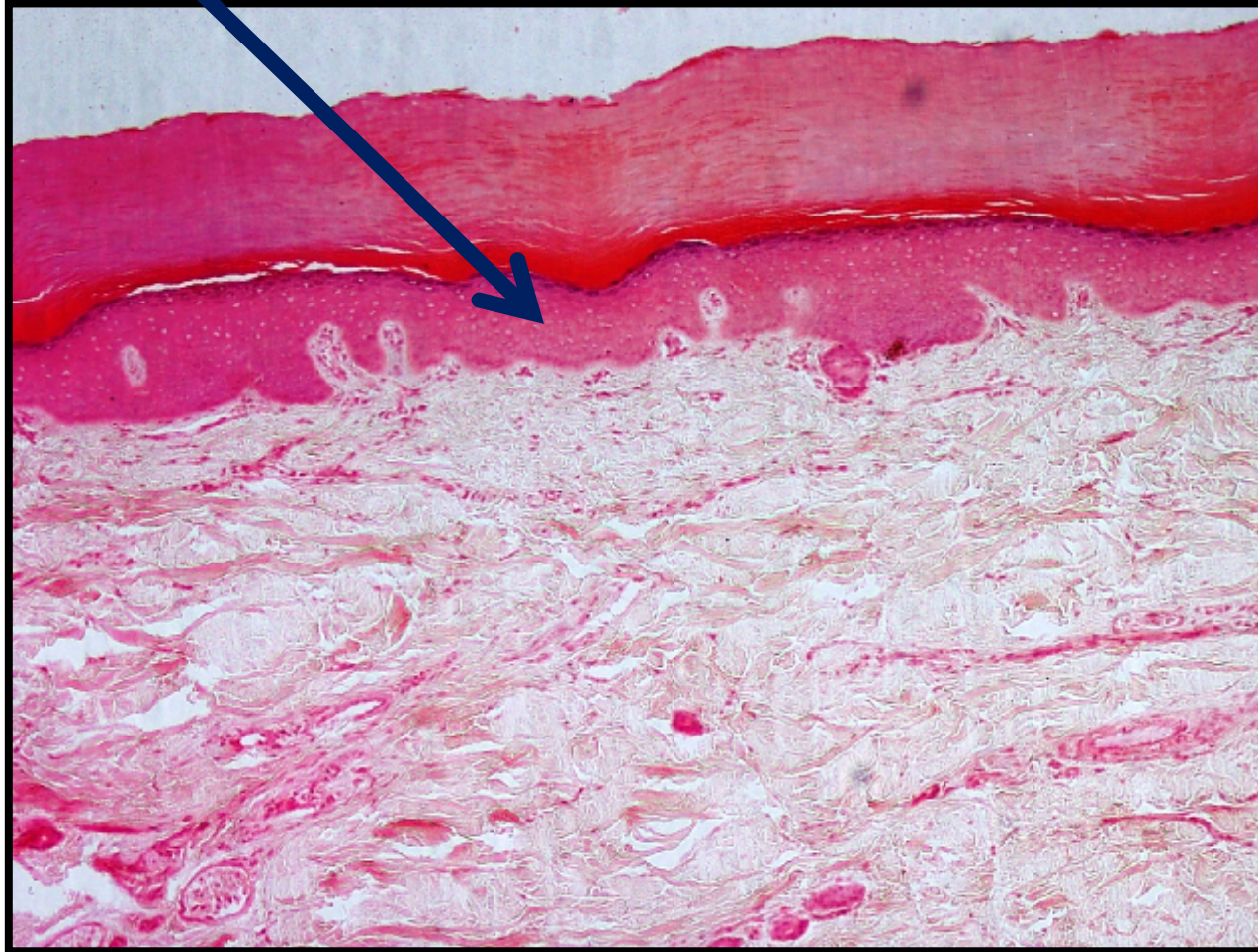


**Pseudostratified columnar ciliated epithelium
with goblet cells + Hyaline cartilage (Trachea)**

3

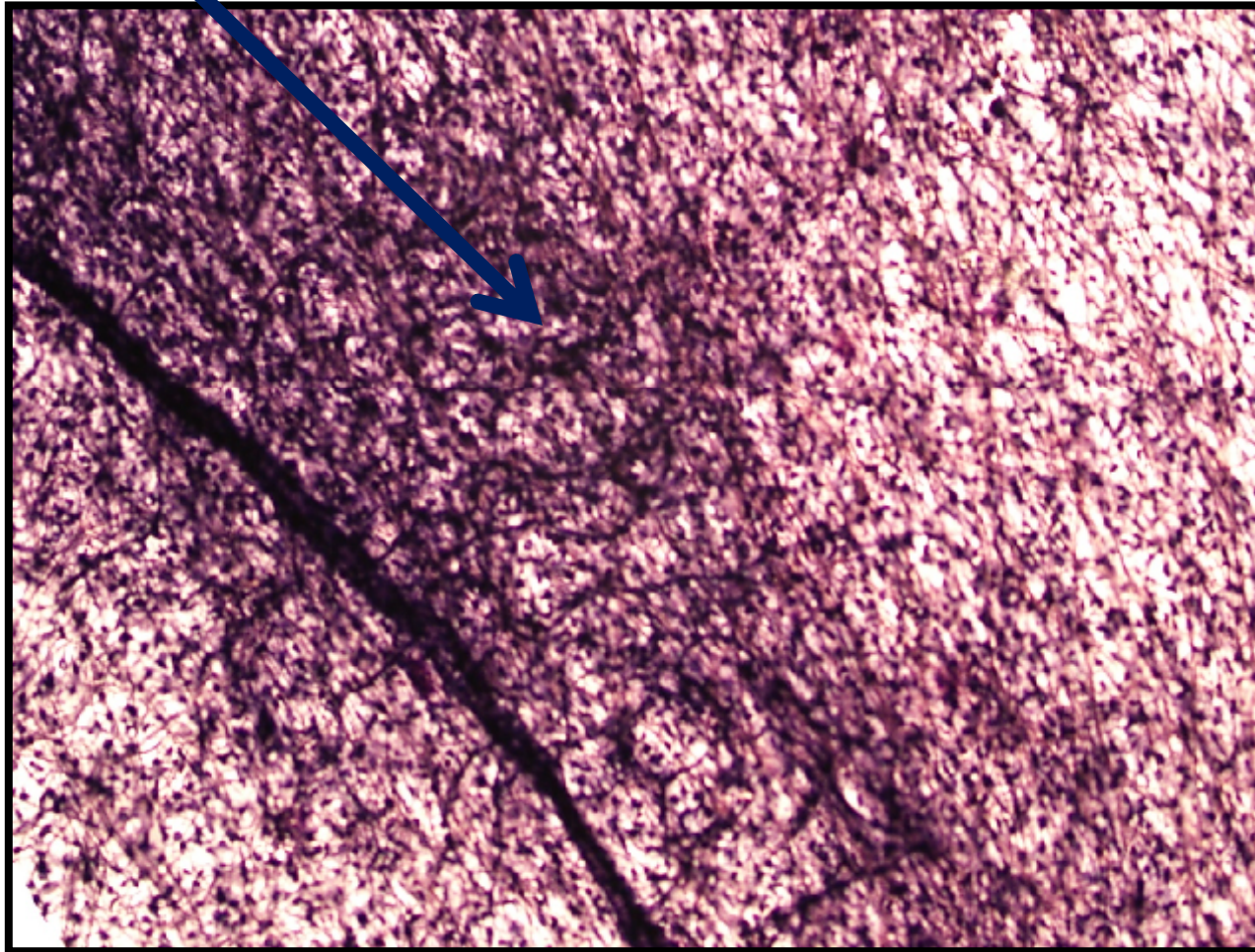


Stratified squamous keratinized epithelium (Thick Skin)



4

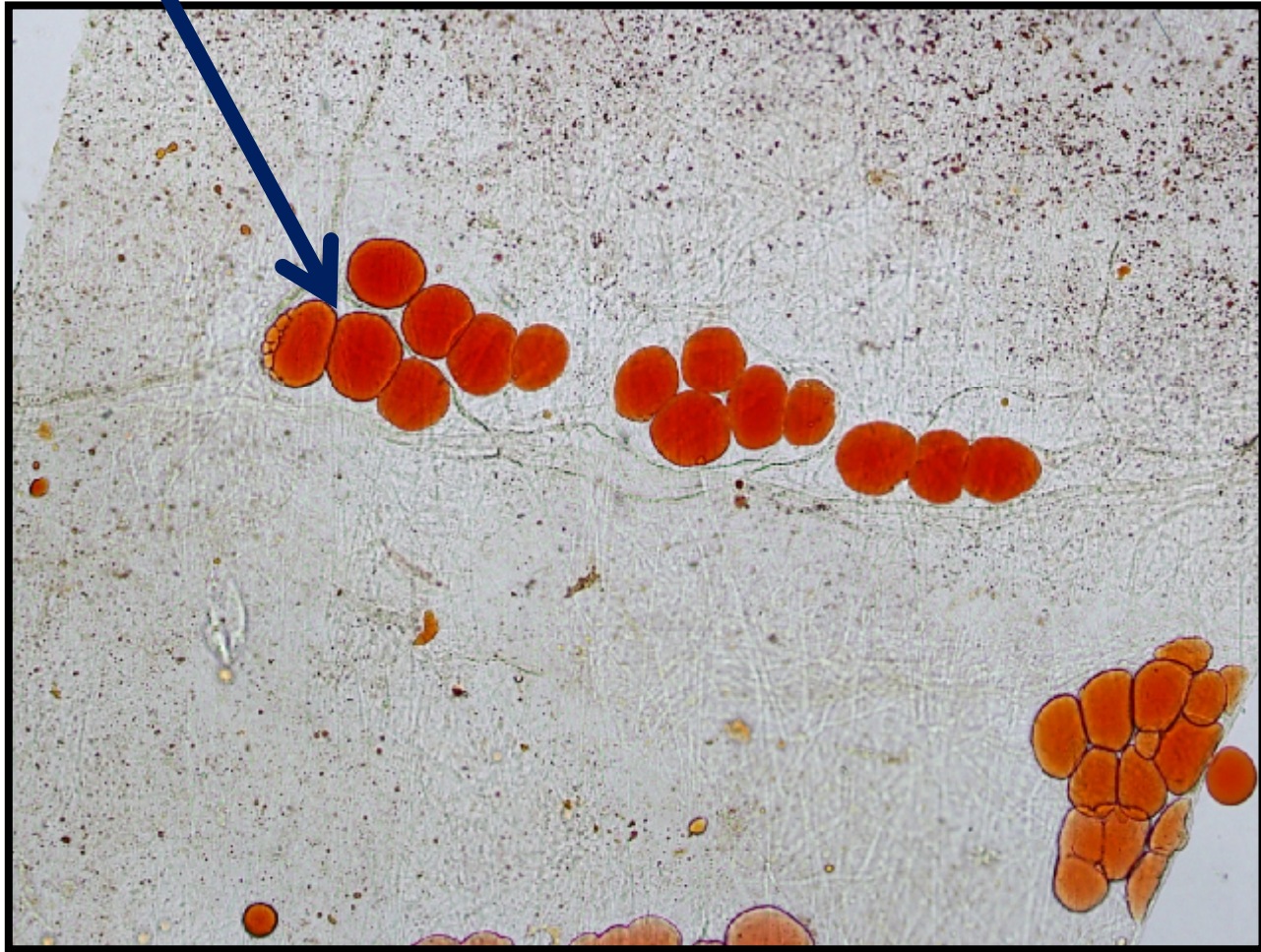
Loose Areolar Connective Tissue



5

Adipose Connective Tissue

6

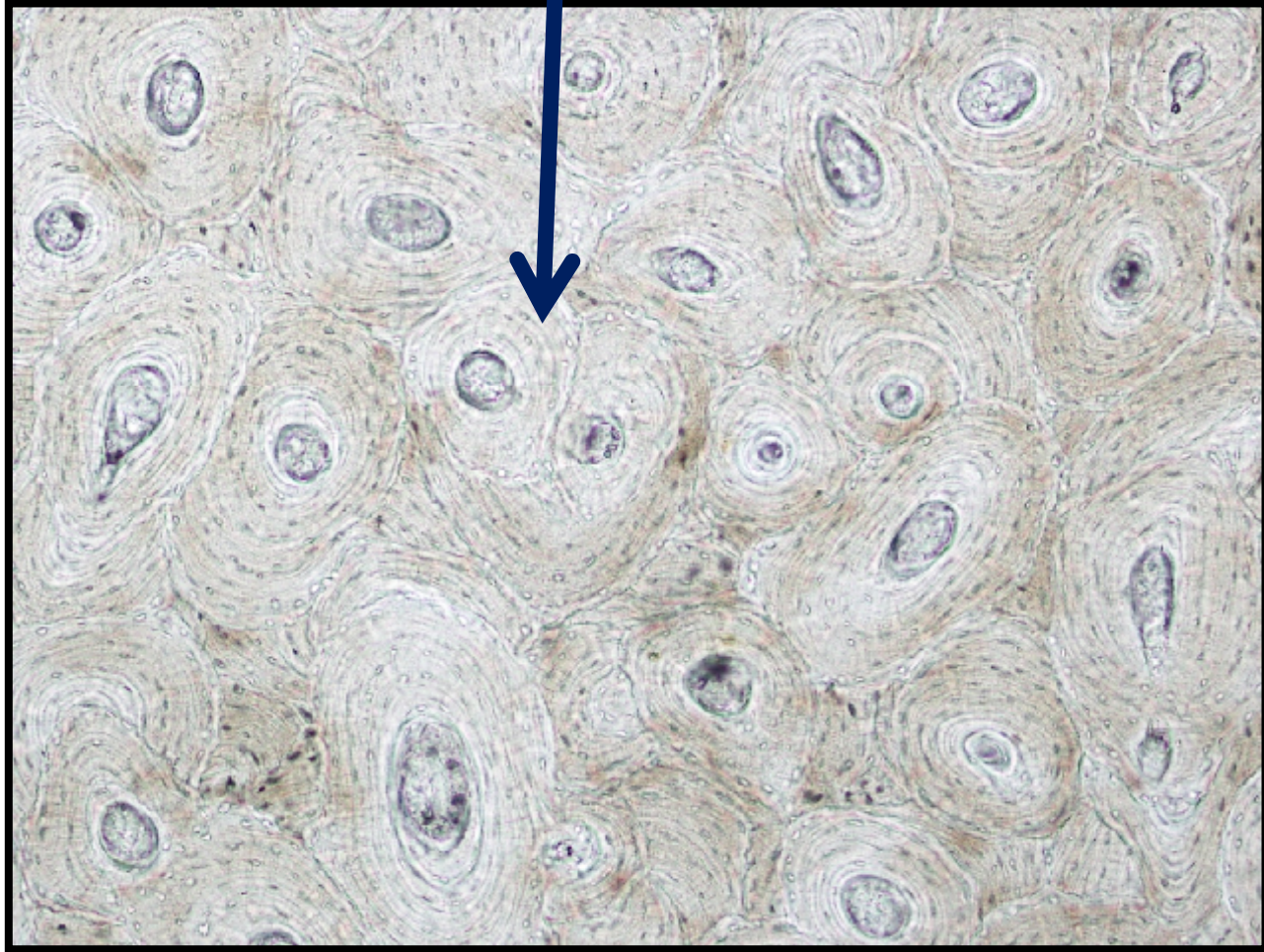


Aorta



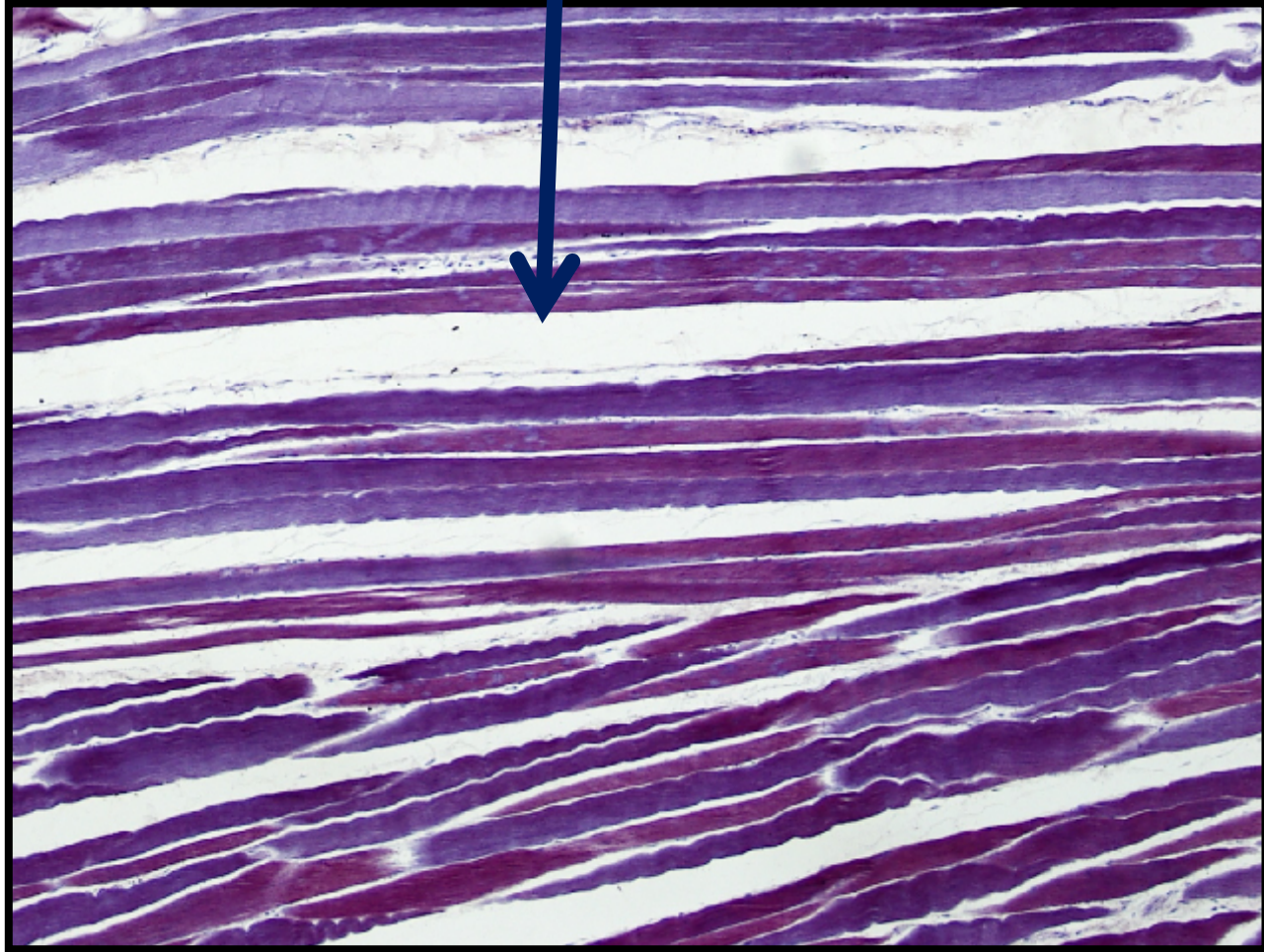
7

Compact Bone



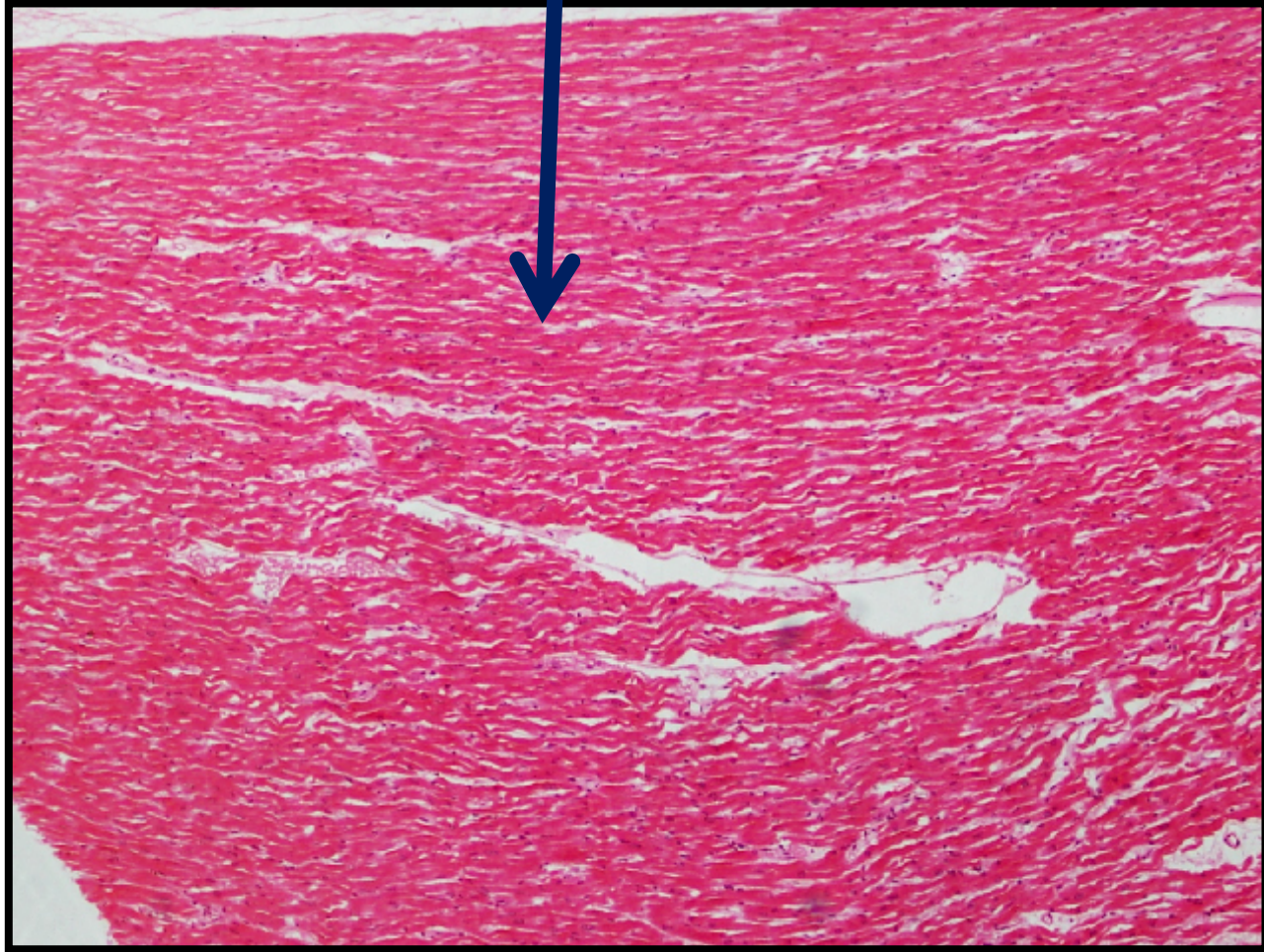
8

Skeletal Muscle



9

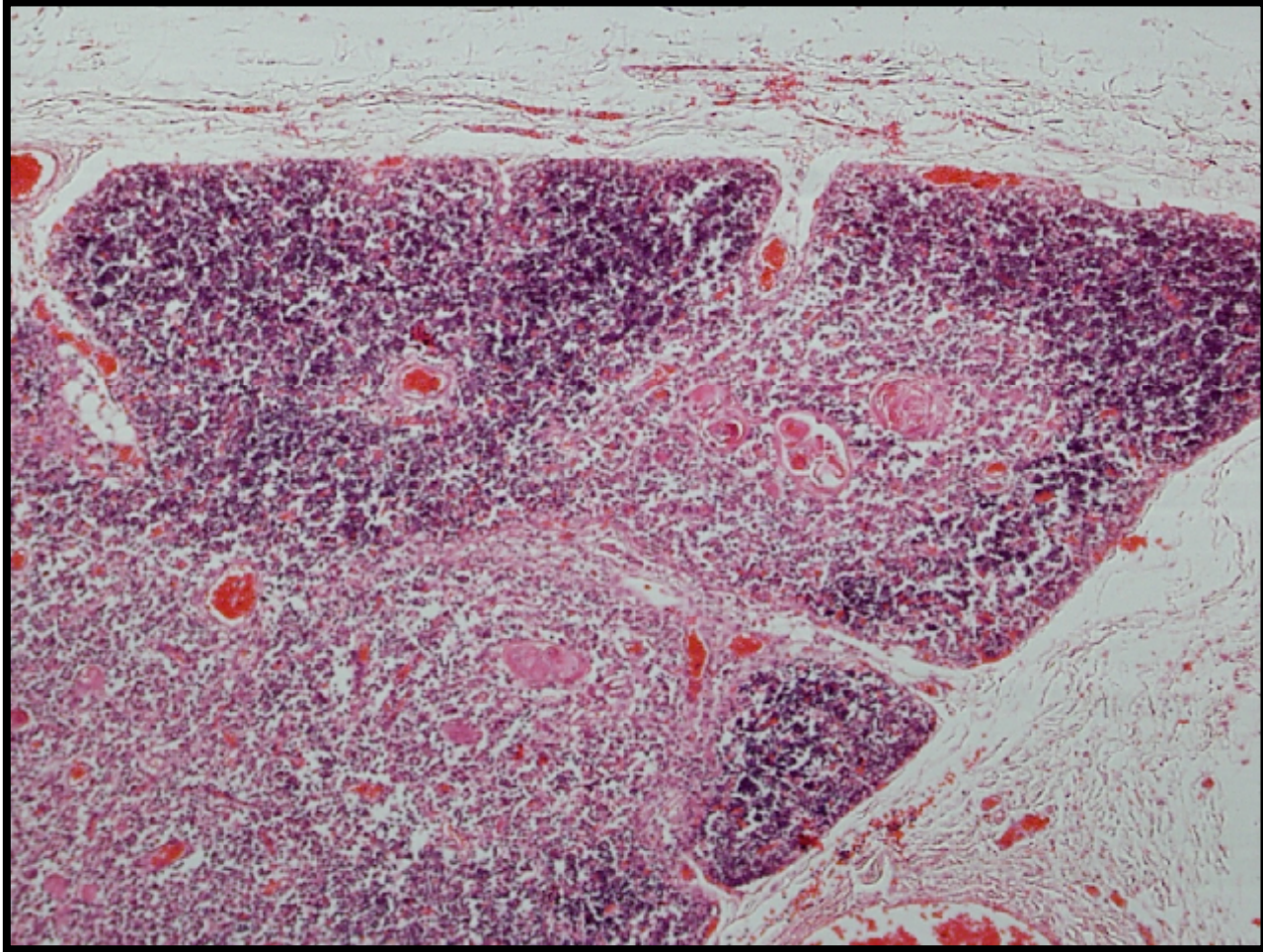
Cardiac Muscle



10

Thymus

11



Lung

12

